



12 Pt. Nuts



Barrel Nuts



Castle Nuts



Chamfer Top Nuts



Clinch Nuts



Dome Nuts



Flexlock® Nuts



Gang Channels



Heavy Hex and Flange Nuts



Jam Nuts



Nut Plates



Self-locking Nuts



Shank Nuts



Spline Nuts



Wing Nuts

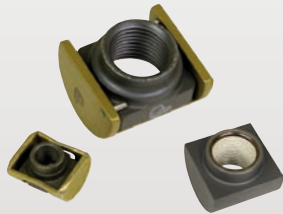
NUTS

12 Pt. Nuts *in accordance w. MIL-N-25027*



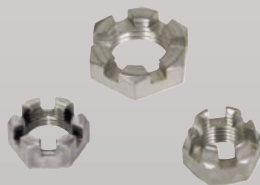
AS3397	NAS1727
307A9215	NAS1727C
	NAS1804
	NAS1805

Barrel Nuts Series



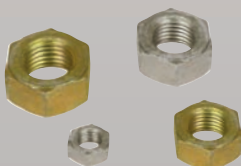
SL50	Barrel Nut, Self-locking, Floating, 180 KSI [1241 MPa]
SL50MJ	Barrel Nut, Self-locking, Floating, 180 KSI [1241 MPa]
SL405	Barrel Nut, Self-locking, Floating, 220 KSI [1517 MPa]
SL414	Barrel Nut, Self-locking, 220 K SI [1517 MPa]
SL414MJ	Barrel Nut, Self-locking, 220 KSI [1517 MPa]
SL4001	Barrel Nut, Non-magnetic, Self-locking, Floating, 220 KSI [1517 MPa]
SL4005	Barrel Nut, Non-magnetic, Lightweight, Self-locking, Floating, 220 KSI [1517 MPa]
SL4200	Barrel Nut, Self-locking, Non-metallic Lock, 180 KSI [1241 MPa] and 220 KSI [1517 MPa]
SLR5 0	Retainer, Floating Barrel Nut
SLR414	Retainer, Barrel Nut
SLR4001	Retainer, Floating Barrel Nut

Castle Nuts



AN310	MS35649
AN315	MS35650
AN316	
AN320	

Chamfer Top Lock Nuts



M45913/2
M45913/4

Clinch Nuts



AN310
NASM45938/5
NASM45938/8

Dome Nuts



NAS1473
NAS1474

Floating Nut Plates



NAS1791	NASM21059
NAS1792	NASM21060
	NASM21061
	NASM21062
	NASM21075
	NASM210761

Flexloc® Nuts



AN364	MS21045	MIL-DT
AN365	MS21046	MIL-N-7873
MS20364	NAS1021	SPS-N-111
MS20365	NAS1022	SPS-N-631
MS20500	NASM25027	SPS-N-684

Gang Channels



NAS1783
MS21063
MS21064
MS21064L
MS21065
MS21065L

Heavy Hex and Flange Nuts

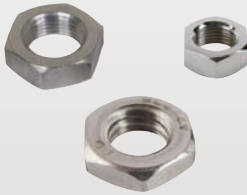


NASM16228

NASM21042

NASM21043

Jam Nuts



11416NFJBRS

MS1692-525CE

MS51968

12288774

MS1692-587

MS51970

1418NPT

MS1692-621CE

MS51971

2601814-001

MS3186A109A

MS51972

4G14643-101A

MS16203

MS51983

5.31001E+12

MS16285

MS51984

5811NFJALUM

MS16286

NAS509

6918896

MS17187

NAS671

70400-02267-103

MS21304

NAS1423

AA52427

MS21340

NASM35649

AA55628

MS24679

NASM35650

AA55629

MS24680

NASM310

AN310

MS25082

NASM315

AN315

MS27040

NASM316

AN316

MS27952

NASM320

AN320

MS35649

12288774

AN340

MS35650

12387151

AS5178-7

MS35690

12387277

AS5178D6

MS35691

12387303

B18295B5

MS35692

12387305

BACN1U6CD2RN

MS45905

**Procurement
Specification**

D1-4426

MS51469

FF-N-836E

MS51470

MS51471

MS51472

MS51473

MS51858

MIL-DTL-1222J

MS51860

MIL-DTL-45913/2

MS51865

MIL-DTL-45913/4

MS51922

MS51967

Self-locking Nuts



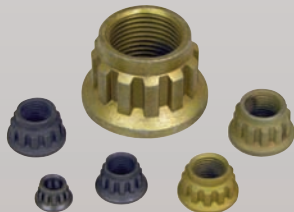
AN363	MS21083 – MS21087	NAS1735
ASAS3397	MS21133 (NASM8985)	NAS1765
AS42910 – AS42915	MS21225	NAS1766
AS64366 – AS64374	MS21245 – NAS679	NAS1770 – NAS1779
MA3429	NAS687	NAS1791
MS14144	NAS696 – NAS698	NAS1792
MS14145	NAS1022 – NAS1028	NAS1794
MS14156	NAS1031 – NAS1033	NAS1795
MS14164 (NASM14164)	NAS1067	NAS1803 – NAS1805
MS14182 (NASM14182)	NAS1068	NAS1870
MS17825	NAS1288	NASM8985 (MS21133)
MS17826	NAS1291	NASM14164 (MS14164)
MS20500	NAS1473	NASM14182 (MS14182)
MS20501	NAS1474	NASM25027 (MIL-N-25027)
MS21042 – MS21065	NAS1727	(Airbus NSA5470)
MS21069 – MS21076	NAS1727C	NSA5471
	NAS1734	NSA5473

Shank Nuts



AS27852 – AS27880	MA3433
AS44750 – AS44753	EN2911
AS54471	
AS62300 – AS62349	
AS63540-89	
AS63477	

Spline Nuts



AS64366-374	NASM14164	MS14164
MA3429	NASM14182	MS14182
	MS21084	
	MS21085	
	MS21133	

Wing Nuts



AN350
MS35425
MS35426